

The Garland City Gazette

Inside this issue:

Ashland's Schools	1, 6
President's Corner	2
Jeffrey W. Cate	2
Sumner Tanner	3, 5
Bright Spot	4, 7
Donations	5
Memorials	5
Membership	8

The Continued History of Ashland's Schools

Although Ashland was first settled in 1854, the town did not really get going until 1872 when 'The Boys of '72' arrived with the advent of the first railways to Ashland. Ashland schools officially started in 1872 with Mr. Thomas Bardon teaching at Bay City School on 12th Avenue East and Second Street and Mrs. Kittridge at the old 9th Avenue School site at 9th Avenue and Third Street West.

St. Agnes parish established a grade school in 1881 and it is now known as Our Lady of the Lake School. Holy Family grade school was built in 1900 and closed in 1971. DePadua High School started in 1928 and closed in 1967. Students at St. Mary's School in Odanah were filtered into DePadua or Ashland High School.



Ashland High School at Ellis Avenue between 10th and 11th Streets.

Over the years, several city schools were built and used, but eventually the main city-run grade schools were The 9th Avenue School, Beaser, Ellis, Wilmarth, Lake Shore and Bay City schools, while the brownstone high school on Ellis Avenue built in 1904 served the older students. Overcrowding forced the city to build additions to the three largest grade schools in 1955. While this was happening, most of the Beaser first through second grade students were bussed to Lake Shore School. The school system also built the new Bay City School that opened in 1955 and the Marengo Valley School that opened in 1956. The old Bay City School continued to house the Ashland County Teachers College that had shared the building since 1920. The new Bay City school continued to serve as a place for the county teachers to practice their teaching skills. When Bay City School closed, it became the new home for Headstart (Family Forum). The new Marengo Valley School combined the schools of Sanborn, Brunsweler and Marengo and the first kindergarten class took place in 1956-57.

Madeline Island was in Ashland County and the LaPointe School served the Madeline Island students and was part of the Ashland School District. When the students reached 9-12 grades, they were transported to Ashland to attend

Continued on page 6

President's Corner by Tory Stroshane

Spring /Summer is finally here after an exceptionally long winter. I didn't think the ice would ever leave the bay as it was very late this year.

We will be hosting the annual Cemetery Walk on July 4th from 2-4 pm. It will be at Mount Hope Cemetery with an alternate site at the Saron Lutheran Church social hall at 517 9th Ave. W if it rains. Fingers crossed that we have good weather. Entrance is free, but donations are very welcome and appreciated.

We will also be hosting a book signing on Saturday, June 25 from 10 am—12 pm at the museum for Tom Tardiff and his book *Growing Up Soo Line*. Stop in for your copy and chat with the author about the history of railroads in Ashland.

If you haven't had a chance to see the revamped museum, you are in for a treat. We have a new acquisition from Xcel Energy. It is a model of the lakeshore that was used during the Super Fund clean up. Our other new displays will be sure to entertain you, too.

There are many new locally themed articles in the Gift Shop. There are school related items that will go well with the All-School Reunion for DePadua and Ashland High (July 15th and 16th) centered right outside our door. We have most of the yearbooks for the schools in Ashland, so if yours got lost somehow, you can look through ours. If any class reunions have photos taken, send us a copy for our school files. Bay Days is also the same weekend, so there will be lots of entertainment to enjoy.

Our hours are Thursday, Friday and Saturday from 10 am to 3 pm. The cut off for the Gazette is the 15th before June 1st, September 1st, December 1st and March 1st. If you sent in a donation or memorial and did not see it in the most recent Gazette, then it should be accounted for in the next Gazette.

The 2023 History a Day at a Time calendar is now available for purchase.

Thank you to all the members for your continued support to the ASHM.

Jeffrey W. Cate

The AHSM board sadly announces the death of longtime board member Jeff Cate. Jeff was born and raised in Ashland and had a love of the big lake and the surrounding area and showed it through his photography. Tied together with his love of history, he was a very important part of our team with his historical photo posts in the *Daily Press* and working with the photographs in our collection. Jeff will be greatly missed.

Ashland Historical Society

Board of Directors

Tory Stroshane, President

Sam Solberg, Vice President

Barbara Suminski, Treasurer

Mary Grube, Secretary

Mary Gruper

Bob Klamerus

Rita Kovach

Ed Monroe

Glen Samuelson

Jon Walworth

Mission Statement

The Ashland Historical Society, a non-profit volunteer organization promotes the appreciation of local history and pride of community through a visual connection to the past by collecting and preserving memorabilia and artifacts, stories and traditions and by functioning as an educational resource.

**Ashland
Historical
Society
Museum
Hours**

*Thursday, Friday,
Saturday
10 am to 3 pm*

Sumner Warren Tanner—A Mover and Shaker

One of the “Boys of 1872”

Sumner Tanner was born August 18, 1845 in Pavilion, New York to Horace and Mary Tanner. Horace was a farmer who eventually moved to Jackson, Michigan and farmed there.

In 1870, Sumner was managing a stage line between Marquette, Escanaba and Menomonie, Michigan. He moved to the head of Lake Superior and ran a ferry tug, the Frank C. Fero, as a passenger ferry between Duluth and Superior. Guy Burnham writes that Tanner was involved when Duluth built a wooden dyke across Superior Bay with the idea of diverting the St. Louis River so it would scour a deeper channel than the dredging had left. Tanner promptly blew up the dyke one night and was patted on the back by Superior. Tanner continued to run the ferry until 1872.

Sumner Tanner was married to Ella French in Superior, WI on July 8, 1872. She was the daughter of Russell and Rosetta French, who came to Ashland in 1872 and established a hardware store. Tanner and Ella raised four daughters and one son: Nettie Gertrude, Jessie Belle, Florence Lilia, Eva Ruth, and Frank Sumner. In 1897, the Tanners celebrated a double 25th wedding anniversary together with the William Tompkins at the Masonic Temple ballroom.

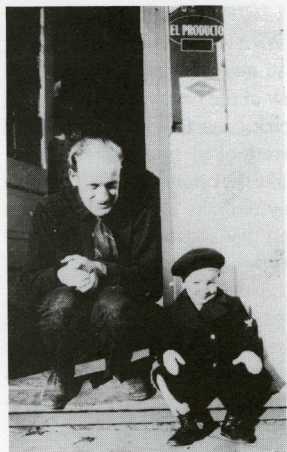


Tanner arrived in Ashland in June of 1872 and ran his ferry between Ashland, Bayfield and La Pointe. It was completely re-fitted in 1873. His advertisements touted his ferry as being fast. Besides hauling passengers and freight, the Fero did special excursions among the Apostle Islands.

Travel.

BAYFIELD AND ASHLAND PACKET.
FRANK C. FERRO,

 Will leave Bayfield for Ashland every morning at 9 o'clock, and returning leave Ashland at 4 o'clock, P. M. Fare each way \$1. This fast sailing and splendid packet has been thoroughly refurnished and made pleasant for travelers, and will ply in the trade during the season. For freight or towing apply on board.
S. W. TANNER, Master.



Dad and I on the stoop on the south side of the store. I used to sit here many times watching the trains come and go and the traffic move up and down 7th Avenue.

The Bright Spot by Jim Goeltz

Two or three years ago on a nice fall day in October, I had a visit from Paul Zinnecker. Paul is the son of Tom Zinnecker who was two classes ahead of me at Ashland High. Paul paid me another visit this past spring as he was headed to Iron River where the family has a summer cabin on Lake Millicent. This is a short story about Tom.

Tom Zinnecker, Ashland High School class of '44 resides in Ashland. After going through Ashland grade schools, Tom entered Ashland High, the old school, which was on Ellis Avenue between 10th and 11th streets. Tom loved tennis and basketball. In fact, tennis was his favorite. He played the game quite a bit out on Sanborn Avenue at Doc Tucker's house. According to legend, Tom might have been the best tennis player in Ashland at that time. No dispute there!

During high school, Tom played basketball for coaches Elmer Weikal, Lynn Hovland and Roy Melvin. The latter found that Tom had good and swift hands and encouraged him to come out for football. Tom did and he and Red Nylen anchored the Purgolders' offensive line. As a freshman he played for Weikal. He then played for Lynn Hovland for a couple years and was under Roy Melvin's guiding hand by his senior year. I remember that back in the tournaments of 1942 through 1944, Ashland's basketball teams experienced tough losses against Hurley and Superior East and Central.

Following high school, Tom joined the Marine Corps and was a survivor of the battle for Iwo Jima, exiting the service as a Corporal. In January 1946, Tom along with many other veterans, entered Northland College and put the Lumberjacks back on the college basketball map. The influx of veterans came following a 0-7 start. One opponent, who was a Northland opponent before the veterans arrived, said: "Who ARE these guys?". Indeed!

Somewhere in that period, someone (probably teammate Jack Lodle) remarked on Tom's "patented" one-hand shot from the corner of the gym. This remark made it to the Wedge, Northland's annual. My guess is that it was a quote belonging to Lodle, as he was noted for coming up with nicknames. Tom Zinnecker was Northland's basketball captain his junior and senior year.

After graduation Tom found employment in Bonners Ferry, Idaho, probably courtesy of Professor John T. Kendrigan who was noted for placing his students in jobs. Tom taught English and was head basketball coach for several years. He then returned to northern Wisconsin where he taught geography for 36 years at Ashland High and he also coached tennis, basketball, and golf.

Tom and Marion Strom married in Ashland on 17 June 1950. That fall Tom took a coaching job in Idaho. Their daughter Jo Ann was born in Idaho. After one year the family returned to Ashland. The couple's other three children, Paul, Jeff and Scott, were born in Ashland. Tom taught at Ondossagon for two years before being hired by the Ashland school system. He spent the next 35 years teaching and coaching basketball, tennis and golf at AHS. He had quite an impressive career. He currently holds the honor of the oldest retired teacher from the Ashland School District.

Continued on page 7

Tanner continued

Tanner had several other enterprises and occupations. In 1875, Tanner became sheriff and quit the ferry business. In 1881, he had a contract for the sidewalks on the west end of Second Street. He owned a mule team that delivered water; he was involved in the distribution of loads of ice and in 1882, he was also selling horses and sleighs to the lumber camps.

His next business venture was a brickyard. In June of 1883, Tanner received the machinery for the brickyard. By July, he had 100,000 bricks ready to burn in his kiln. His bricks were famous for their yellow color. An ad in the Ashland Weekly paper advertised that Tanner had a good supply of brick ready for the spring demand. His bricks were used in part of Second Street in 1887 and were used in many buildings in Ashland. His kilns also produced two sizes of tiles.

He was enjoying a respite from being a judge in 1886. From 1897 to 1902, Tanner was the city fire marshal and chief of police.

Tanner owned several tracts of land in Ashland and Bayfield counties. He maintained his land in the area and in 1911, he sold what became the Highland section of Mount Hope Cemetery to the city for \$2000.00, which added 300 plots to the cemetery.

His last occupation was that of a fruit grower and he remained one until his death on November 10, 1913. He is buried in Mount Hope Cemetery. His wife Ella followed him in death in 1928.

Donations

June and Bob Belsky
 Dinny and Gary Bolka
 Pamela Brien
 Bill Brown
 Elizabeth Chambers
 Don and Connie Chase
 Gretchen Conley
 Sue and Bill Dandeneau
 Richard Daughenbaugh
 Mary and George Fall
 Diane Flanders
 Nancy Griffiths Jens
 Clifford Hadland
 Vaughn Hallada
 Doris E. Hanson
 Louise Hicks
 Helen Hoar
 Michael Hoerich
 Carole Huhn
 Margaret and Gary
 Janecek
 Bob and Rosemary
 Janigo
 Kevin Kegel
 Carlo and Chris Kumpala
 Leo and Lois Lightner
 Kristin Mathisen
 R's Body Shop
 Bruce Reed
 Carol Reneau
 Don Reynolds
 Shirley Tarasewicz
 Matthew Theroux and
 Barbara Heget
 James Tomczak
 John O. Uline
 Randy Wassgren

Memorials

For:

Richard Anderson
 Jeff Cate
 Jeff Cate
 Tom and Helen Daughenbaugh
 Patrick Durkin
 Carl and Ursula Hambuch and
 Jim and Bette Boyle
 Ron Hmielewski
 Clayton Howe
 Jerry Huhn
 Albert and Dolores Janecek
 Kenneth C. and Eleanore Johnson
 Patricia Kegel
 Bob Kovach
 Robert G. Kovach
 Marj Lockard
 C. V. and Lillian Olson
 Beth Oujiri
 Ludwika Powaser
 John Walters and
 Ralph and Harriet Swanson
 Bruno Zehren-Benoit

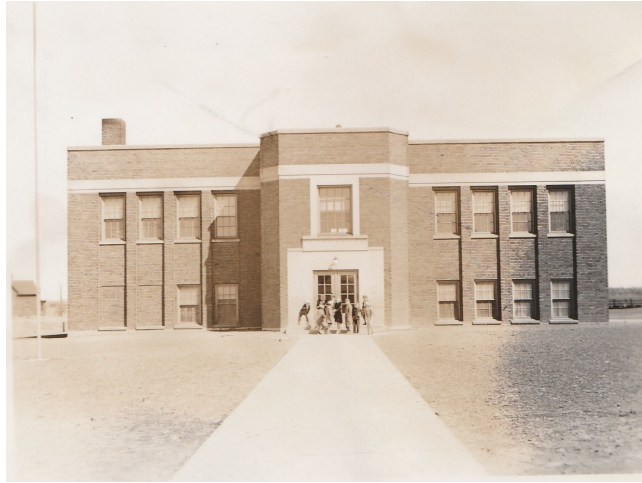
From:

Gail Anderson
 Tom and Betty Yankee
 Jana and Peter Van Evra
 Richard Daughenbaugh
 John E. Snow
 Christine Hambuch-Boyle and
 Stephen Boyle
 Jeanne Hmielewski
 Nancy Teppo
 Carole Huhn
 Margaret and Gary Janecek
 Lyle Johnson
 Kevin Kegel
 Tory and Jim Stroshane
 Patricia Lindholm
 Susan Scott
 Christine Olson Misewich
 John and Mary Podlesny
 Barbara and Bruce Trafton
 Jim and Debi Swanson
 Gary and Bev Zehren

*Rose Bents
Newsletter Word
Processor/Editor*

History of Schools *continued*

Ashland High School and they were housed in homes and apartments during the week. Eventually, the pupils became part of the Bayfield School District. Either way, they rode the ferry in good weather and the ice sleds in winter if the ice road wasn't viable.



The 'new' Lake Shore School, now the site of a Kwik Trip near Walmart.

The first Lake Shore School was opened in 1893, but a new two-story building replaced the old one in 1927. To the east of that school was the Parishville School that ran from 1892 to 1902 and served the children whose parents worked at the Parish Iron Works. That business later became C.G. Bretting Manufacturing Co.

The children at Lake Shore School had Kindergarten plus combined classes of 1&2, 3&4 and 5&6. Crossing guards were placed at 23rd Avenue East and many country kids were bussed to Lake Shore. The playground was at the south side of the school. There were baseball games before school and during lunch hour with many a broken classroom window. Their open recess activities sometimes involved rolling huge snowballs down the nearby ravine in the winter. The summer rec program held at Lake Shore School was a welcome activity during the summer. The 'new' Lake Shore School closed in 1964 and then served as classrooms for the Head Start program. It has since been torn down.

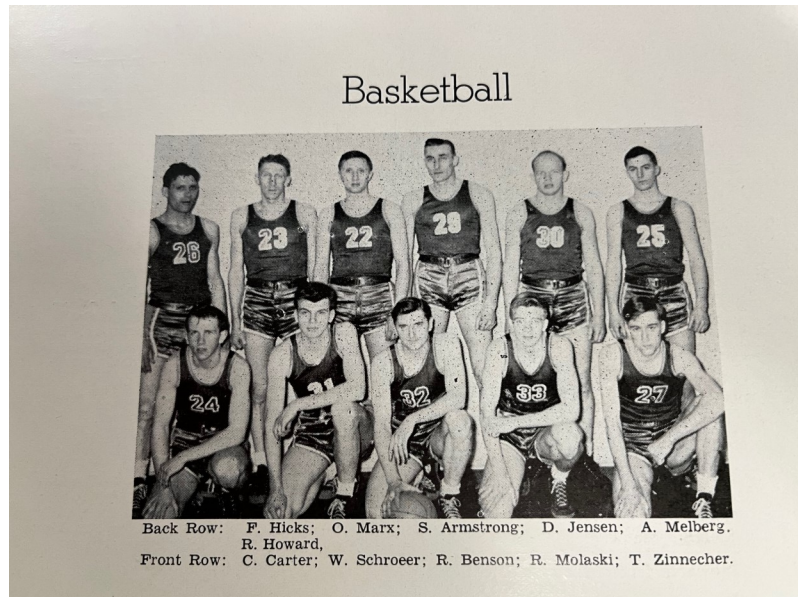
The new Ashland High School was the focus of several frustrating referendums, but it became a reality and opened in 1973. The old high school buildings then became the Ashland Middle School. Neighboring Ondossagon High School closed in 1990 and students were sent to Ashland, Washburn, and Drummond.

The early 1990s saw another building program where a new elementary school was built that eliminated the neighborhood school within the city. The old 1904 brown-stone high school was torn down and an addition to the middle school built facing Ellis Avenue with additions to the Latimer building.

Bright Spot continued

Tom's son Paul spends his summers at the Lake Millicent cabin. He brings his dad out to the cabin occasionally. When Tom is at the lake cottage, he listens to the Twins or Brewers on the radio while relaxing on a lawn chair watching the lake activity. But Tom likes his home in Ashland, too, where he has a daily routine. Tom's wife Marion passed away in 2018.

(Many thanks to Paul for furnishing me information for this article.)



Northland College basketball team. Tom Zinnecker bottom right.

Deadline for articles
in the next
Garland City Gazette
August 15, 2022

Basketball

The Northland College basketball team, cut down to twenty-one men, entered their third week of practise in preparation for their opening game Friday night against Crosby on the latter's home floor. The team returns to Ashland and the Dodd gym the next evening when they play host to a strong Gogebic J. C. five.

Berths on the first five are still wide open and Arns has been using all twenty-one men in an effort to find the group that will start the 29th against Crosby. With a great deal of experience behind most of the men, the coach has been stressing conditioning. The team has been working out three hours a night, six days a week for the last three weeks and Arns hopes to have every man in shape to go the route if necessary come Friday night. Because of his fast guards and a tall forward wall the Coach has introduced a new offensive setup which will be used for the first time at Crosby.

The following men in all probability will be with the squad for the remainder of the season: Hannuksella, Jensen, Schroeer, Zinnecker, Armstrong, Konkol, Marx, Molaski, Pentony, Blake, Thornton, Lodle, Hicks, Carter, Benson, Howard, Barr Melberg, Brown, Hopkins, and Bertheaume.

Remember the first home date—Saturday, November 29th.

Thank you to Heart
Graphics for printing
this issue of
*The Garland
City Gazette*

THE GARLAND CITY GAZETTE

Ashland Historical Society
216 Main Street West
Ashland WI 54806-1513

Phone: 715-682-4911
Email: musem@ashlandwishistory.com
Website: <http://ashlandwishistory.com>

Presorted Standard
U.S. Postage
PAID
Ashland, WI
Permit No. 5

Ashland Historical Society Membership Form

Membership includes family or single member and includes the quarterly "Garland City Gazette" newsletter and 10% off of Museum Gift Shop purchases. Donations, Memorials and Honoring individuals always appreciated.

Member Name _____

Street Address _____

City _____ State _____ ZIP _____

Telephone _____ Cell Phone _____

Email _____

Membership is \$15 per calendar year

Designate your gift \$ _____ membership

\$ _____ donation

\$ _____ memorial

\$ _____ honoring

Total Enclosed is \$ _____

Memorial or Honoree name _____ Please print clearly